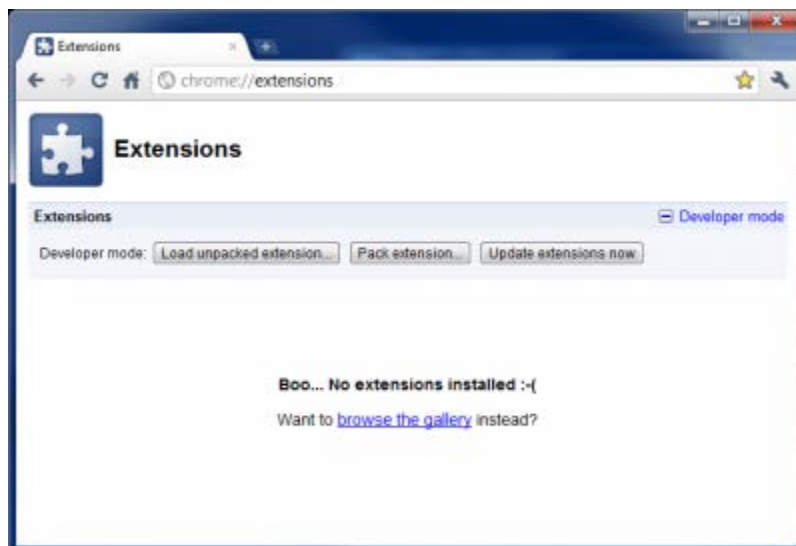


### Preparing Google Chrome for Rapise™

In order to test web applications using the Google Chrome browser, you will need to install an extension for Chrome that allows Rapise to interact with it.

A copy of this extension is provided with your Rapise installation and can be found in the **Extensions** subfolder of your installation.

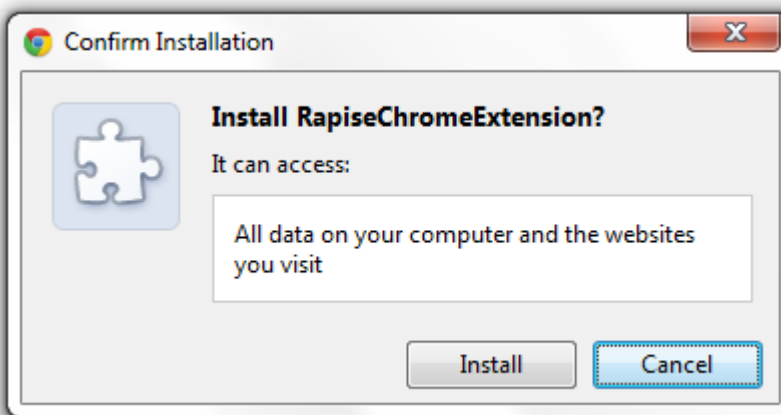
1. In chrome type following URL: `chrome://extensions`
  - If you don't see the omnibox (the field where to type URL) please press Ctrl+T to show new chrome window.
  - Alternatively you can click on the “wrench” icon next to the omnibox and choose Tools > extensions.
2. You should see chrome extension manager:



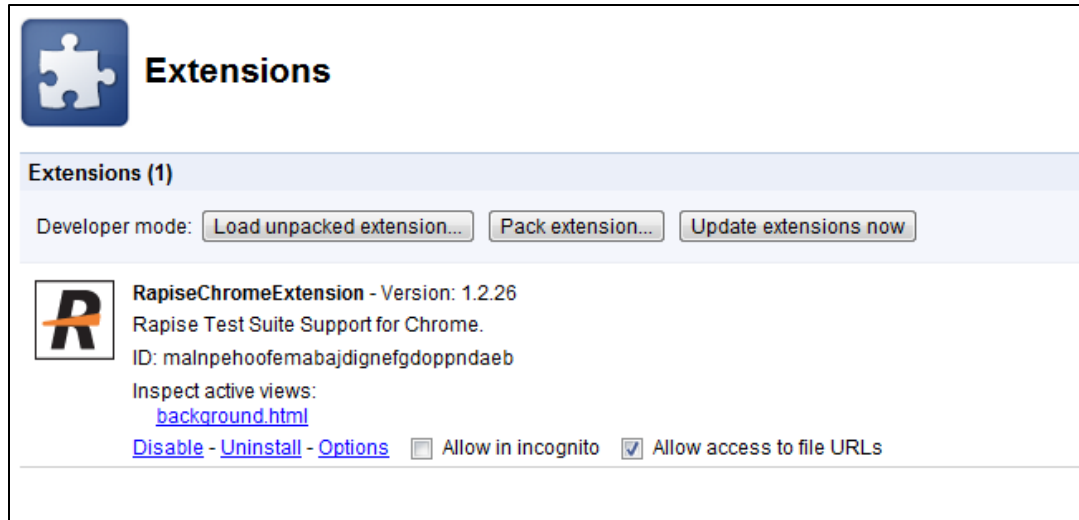
3. Drag the file RapiseChrome.crx from the Extensions subfolder of your Rapise installation and drop it into the Chrome window. You should see the confirmation box in the bottom:



4. After pressing "Continue" press "Install" the display the following confirmation dialog box:



5. Now you should see your extension in the list of installed extensions:



6. It is recommended to set "Allow access to file URLs" checkbox so that web pages opened from the local folder (using the file:// protocol) can be also accessed by Rapise when running automated browser tests.