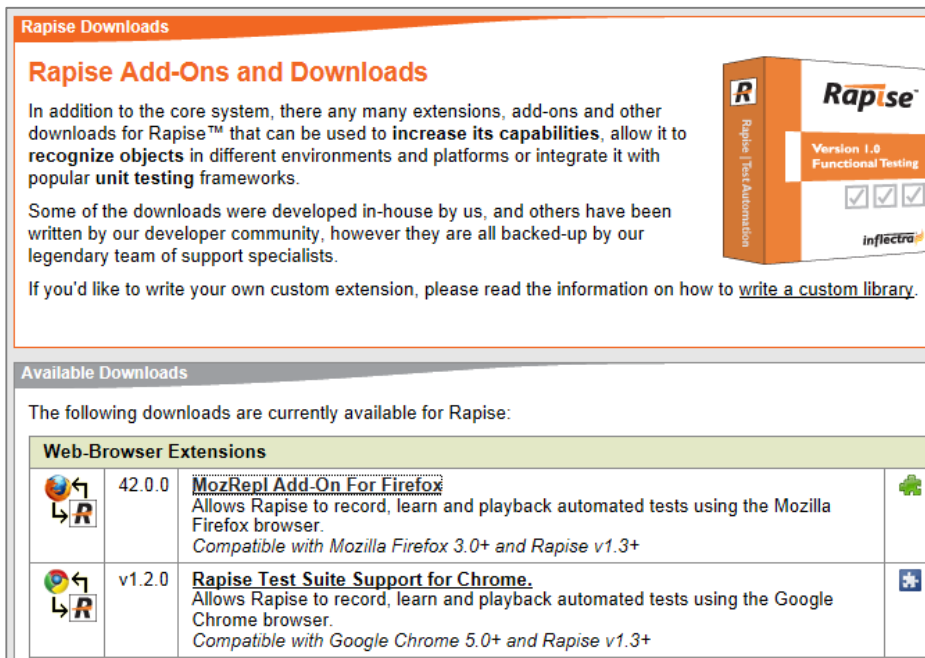


Preparing Firefox for Rapise™

The following steps are required to enable Firefox testing in Rapise. This action is only required once when Firefox is installed on a fresh PC.

1. Launch Firefox. Navigate to the following URL: <http://www.inflectra.com/Rapise/Downloads.aspx> :



The screenshot shows the 'Rapise Downloads' page. It features a section titled 'Rapise Add-Ons and Downloads' with a brief introduction and a list of available downloads. A 3D box for 'Rapise Version 1.0 Functional Testing' is also visible.

Rapise Add-Ons and Downloads





In addition to the core system, there are many extensions, add-ons and other downloads for Rapise™ that can be used to increase its capabilities, allow it to recognize objects in different environments and platforms or integrate it with popular unit testing frameworks.

Some of the downloads were developed in-house by us, and others have been written by our developer community, however they are all backed-up by our legendary team of support specialists.

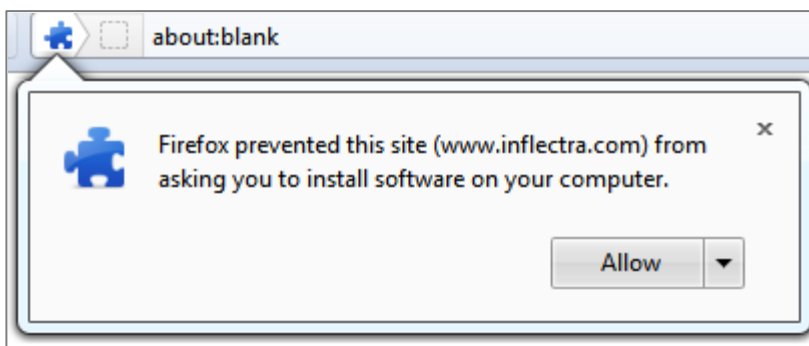
If you'd like to write your own custom extension, please read the information on how to [write a custom library](#).

Available Downloads

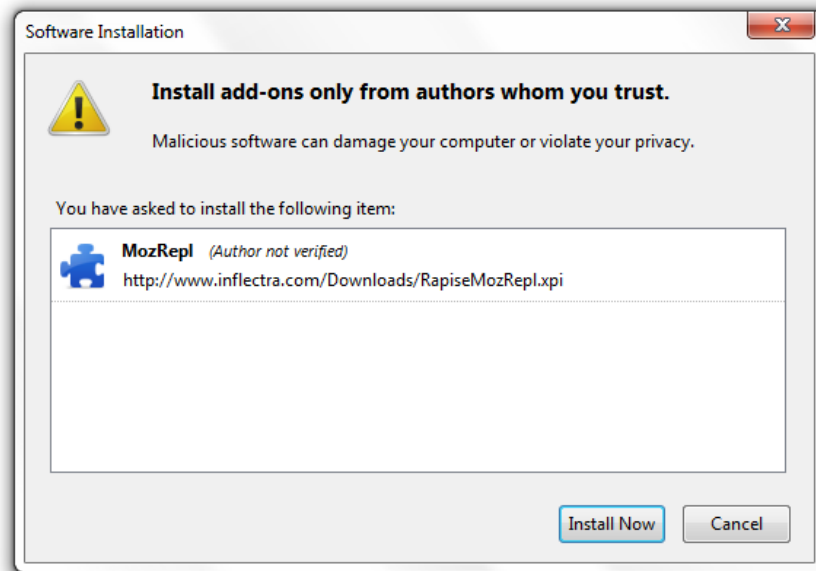
The following downloads are currently available for Rapise:

Web-Browser Extensions			
	42.0.0	MozRepl Add-On For Firefox Allows Rapise to record, learn and playback automated tests using the Mozilla Firefox browser. <i>Compatible with Mozilla Firefox 3.0+ and Rapise v1.3+</i>	
	v1.2.0	Rapise Test Suite Support for Chrome. Allows Rapise to record, learn and playback automated tests using the Google Chrome browser. <i>Compatible with Google Chrome 5.0+ and Rapise v1.3+</i>	

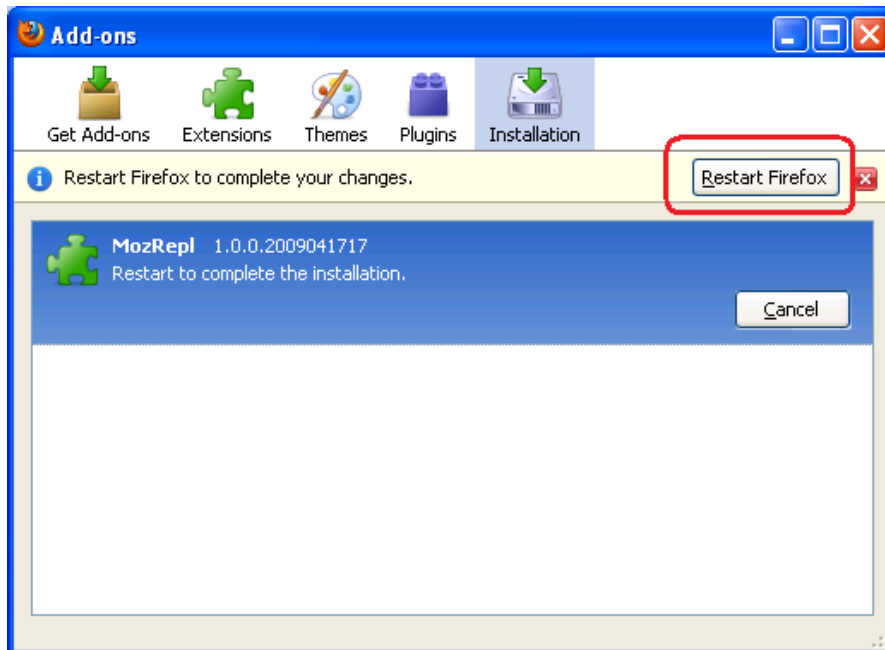
2. Install the “MozRepl” add-on for Firefox by clicking on the “MozRepl Add-On for Firefox” hyperlink:
3. Firefox may show warning message. Press “Allow” to proceed with installation:



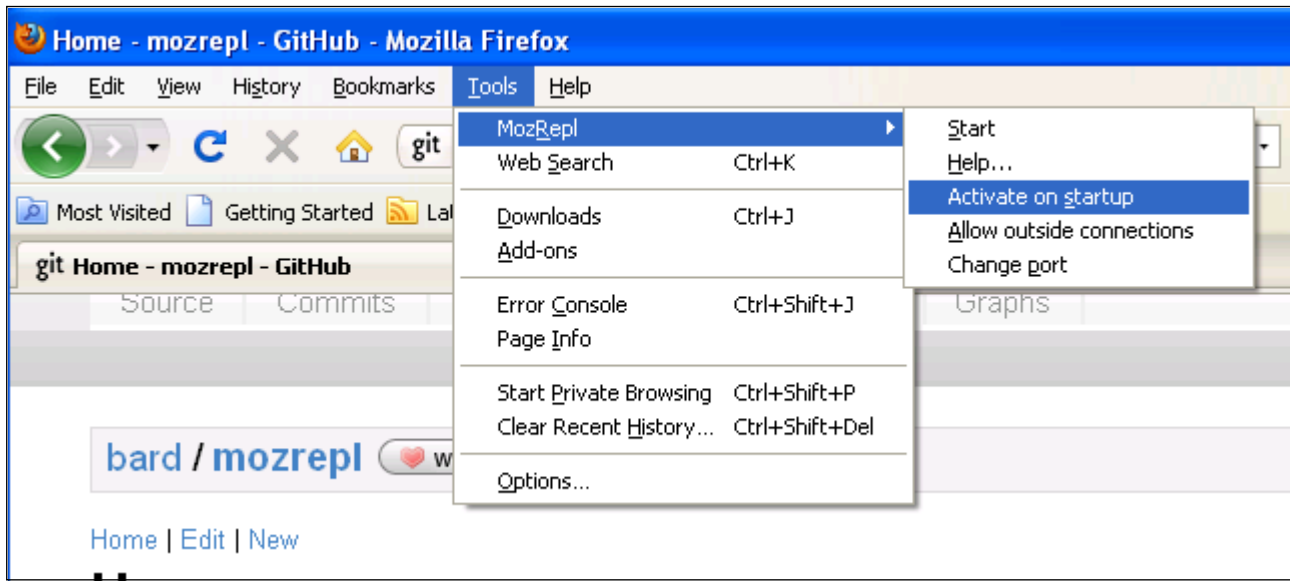
4. Press “Install Now” in software installation dialog:



5. When installation is complete press “Restart Firefox” to complete the installation:



6. Once Firefox is started again set “Activate on Startup” checkbox:



7. Restart Firefox. Now it is ready to be used with Rapise.

Note: MozRepl requires localhost port 4242 to be accessible for correct operation. Please, make sure that this port is unblocked in your Firewall.