

Rapise – Rapid & Flexible Automated Testing

Rapise™ is the next generation software test automation platform that leverages the power of **open, extensible** architecture to provide the most **rapid** and **flexible functional testing** tool on the market today.

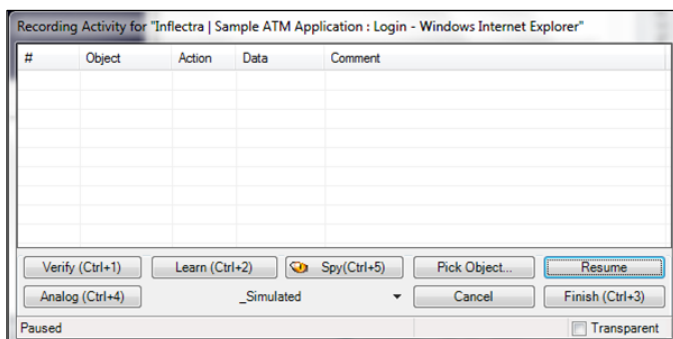
Rapise is ideal for functional **GUI** testing - both client-server and standalone applications, **cross-browser** web testing, and **data-driven testing**. Rapise is the ideal testing solution for today's **agile** software projects.

Key Features Include:

- **Learn and Go™ Capability**
 Rapise's unique Learn and Go™ testing method is much more *time efficient* than traditional record-and-playback processes. Objects can be edited *during the learning process* instead of waiting for all objects to be recorded then edited.
- **Cross-Browser Testing & GUI Testing**
 Rapise comes out of the box with support for testing Windows, Flash, Flex, Java, WPF, Ajax and Web Applications. It allows the *same test scripts* to be executed in multiple browsers unchanged.
- **Extensible Platform for Test Automation**
 Rapise's open architecture provides *unlimited flexibility* to extend the system to meet the unique testing needs of your software applications.

Learn and Go™ Testing

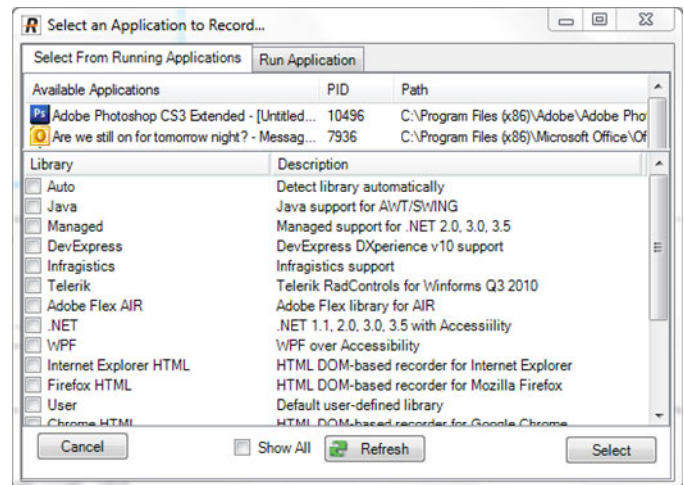
Rapise's unique Learn and Go testing is much more **time efficient** than traditional record, playback and edit. Objects are edited during the learning process instead of waiting for all objects to be recorded. The test script is generated as you go. Faster, more complete test script generation and automatic script updates significantly reduces testing time and **gets your application to market faster**.



Graphic User Interface (GUI) Testing

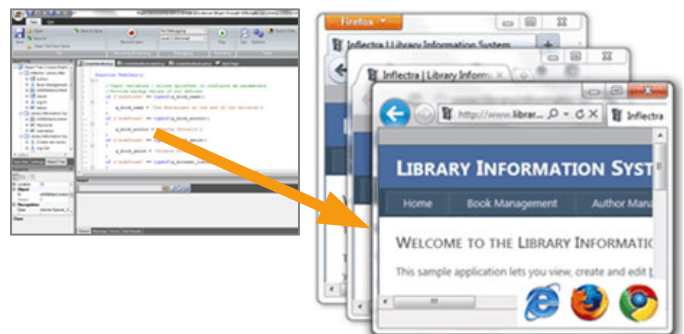
Rapise™ provides powerful **built-in** support for the following GUI platforms: Java, Windows Forms including Infragistics, DevExpress, Telerik, Adobe Flash/Flex including AIR, Microsoft .NET, Visual Basic 6, Win32 applications and Windows Presentation Foundation WPF.

With Rapise you can use the **same environment** to test all these different technologies and platforms.



Cross-Browser Testing

Rapise's cross-browser testing capabilities are best in class, with support for multiple versions of Microsoft **Internet Explorer**, Mozilla **Firefox** and Google **Chrome**. Choose Rapise to test web applications in all of the most widely used browsers.



Record or create one test script and execute the same script without modification across the major browsers. Rapise comes with built-in support for the **Google Web Toolkit (GWT)** and **Yahoo User Interface (YUI)** web application frameworks.

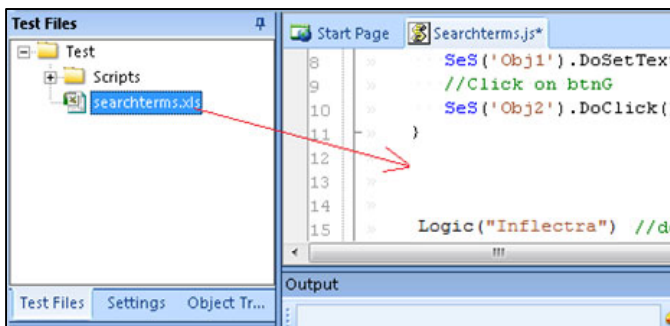
Fully-Integrated with SpiraTest for...

...Requirements, Test & Defect Management

Data-Driven Testing

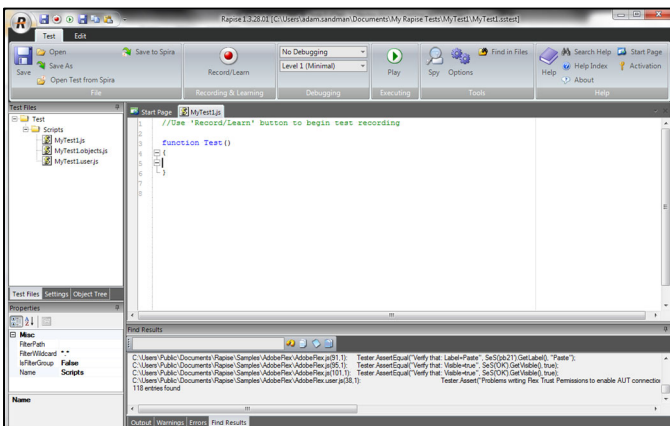
Data-driven testing is the creation of test scripts to run together with their related data sets in a framework. The framework provides **re-usable test logic** to reduce maintenance and improve test coverage.

Rapise provides **strong support** for DDT with the ability to load in sets of test data from an Excel spreadsheet.



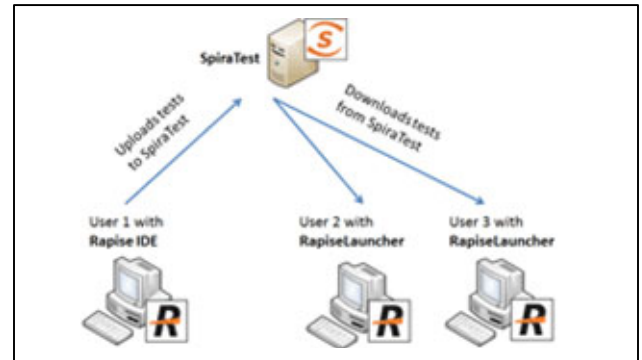
Extensibility & Custom Libraries

The JavaScript source code for library recognition and execution is available to the user, as well as a JavaScript Application Programming Interface (API). New **recognition and execution capabilities** can be added to Rapise by the end user and **shared with colleagues**, giving your team the flexibility to automate where other tools fail.



Integration with SpiraTest

SpiraTest provides an integrated, holistic test management solution that manages your requirements, tests and incidents. When you use Rapise with SpiraTest, you can centrally manage your automated tests and remotely schedule and launch them in a globally distributed test lab.



You can record and create your test cases using Rapise, upload them to SpiraTest and then schedule the tests to be automatically executed on multiple remote computers.

Reporting and Analysis

Rapise comes with **powerful** and **flexible** reporting capabilities that allow you to quickly and easily see the results of your testing activities.

You can even customize the data being reported by adding instructions within your test script.

Name	Start	Type	Comment	Status	Iteration
Character read successfully	15:32:28.89	Assert	T	Pass	0
Letter size is 44	15:32:28.89	Assert	e	Fail	0
Character read successfully	15:32:28.90	Assert	e	Pass	0
Letter size is 24	15:32:28.92	Assert	Text = 'e' Font = (Name='Calibri'; Size=2	Pass	0
Character read successfully	15:32:28.93	Assert	s	Pass	0
Letter size is 12	15:32:28.93	Assert	Text = 's' Font = (Name='Calibri'; Size=1	Pass	0
Character read successfully	15:32:28.95	Assert	t	Pass	0
Letter size is 72	15:32:28.96	Assert	Text = 'Y' Font = (Name='Calibri'; Size=7	Pass	0
C:\Program Files	15:32:28.96	Test	Passed:7 Failed:1	Fail	

Test Fail
Total: 9 Pass: 7 Fail: 2 Info: 0

To learn more about the features offered by Rapise™, and how it will transform Quality Assurance in your organization, please visit www.inflectra.com or contact us via:

Email: sales@inflectra.com
Phone: 1-866-572-5878 (toll-free)
+1 202-558-6885 (outside US)

