



Rapise | Quick Start Guide
Inflectra Corporation

Date: September 29th, 2011



Contents

Introduction.....	1
1. Recording Your First Script.....	2

Introduction

Rapise™ is a next generation software test automation tool that leverages the power of open architecture to improve application quality and reduce time to market.

This guide provides a quick step-by-step tutorial for creating a sample Rapise automated test and playing the results back.

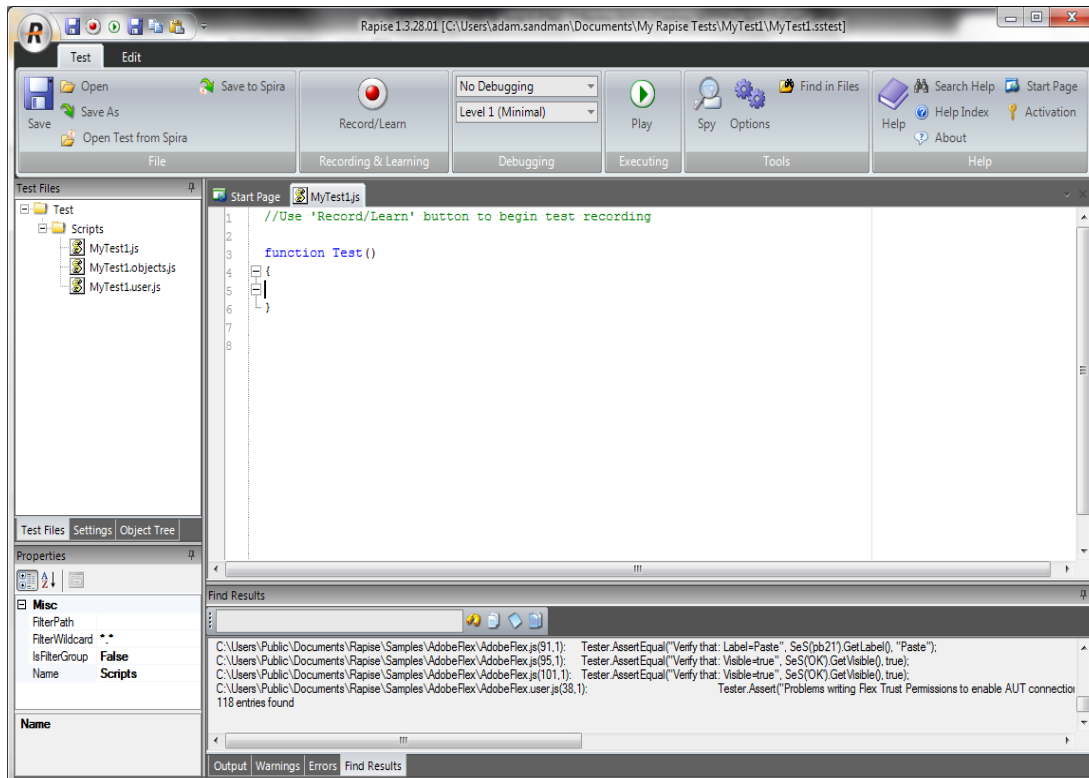
For further information on using Rapise, please refer to the more comprehensive *Rapise User Guide*. For information on using Rapise in conjunction with our SpiraTest test management system, please refer to the *Using Rapise with SpiraTest Guide*.

1. Recording Your First Script

In this section, you will learn how to record and execute a Rapise script. We will be using a demo application called **SampleATM**. Our test will be simple. It will log on to SampleATM, navigate to the main menu, and click on all of the menu options to make sure the links are working.

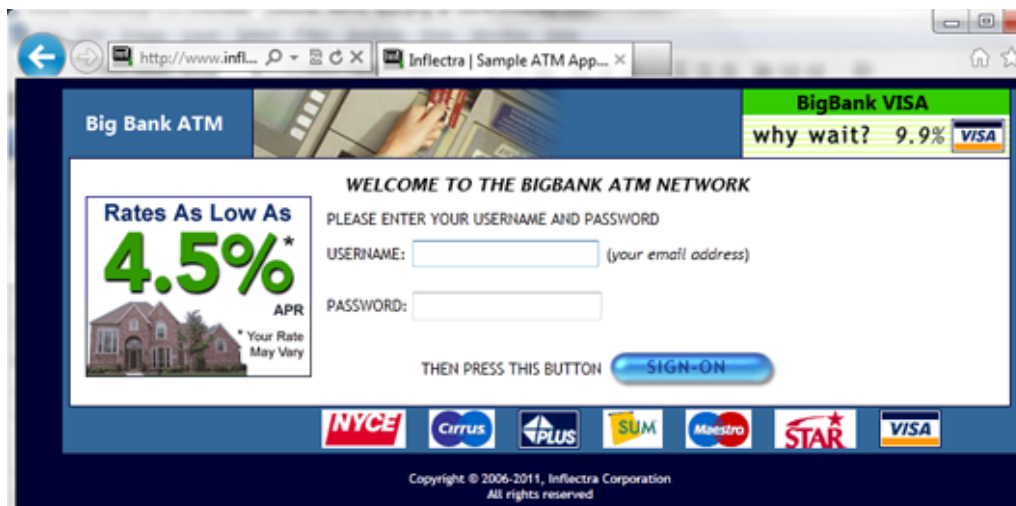
1.1. Open Rapise

Go to Start > All Programs > Inflectra > Rapise. The following window should appear:



1.2. Opening the Application Under Test (AUT)

Open Internet Explorer. You will find it in Start > All Programs > Internet Explorer. In Internet Explorer, navigate to: <http://www.inflectra.com/SampleATM>:

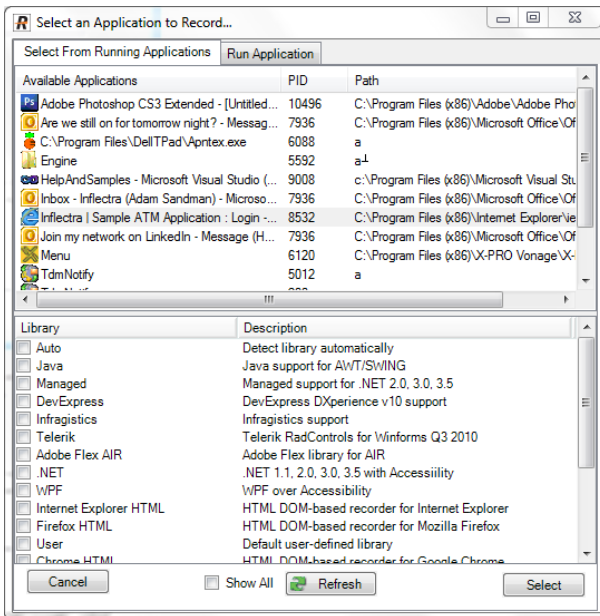


2.3. Starting the Recording Session

In the Rapise window, press the **Record/Learn** button on the Ribbon.



The Select an Application to Record (SAR) dialog box will open:



There are two sections to the **SAR dialog**. In the bottom section, you select which Rapise library will be used during the recording session. Because we will be recording our interactions with Internet Explorer, make sure that the **Internet Explorer HTML** library is checked.

No other libraries should be selected. See below:

Library	Description
<input type="checkbox"/> Auto	Detect library automatically
<input type="checkbox"/> .NET	.NET 1.1, 2.0, 3.0, 3.5 with Accessibility
<input checked="" type="checkbox"/> Internet Explorer HTML	HTML DOM-based recorder for Internet Explorer
<input type="checkbox"/> Firefox HTML	HTML DOM-based recorder for Mozilla Firefox
<input type="checkbox"/> Generic	Generic library contains basic definitions for most commo...

In the top section of the SAR dialog, we choose which application to record. Scroll down the available applications and click once on SampleATM, so that it is highlighted. Now, press the **Select** button near the bottom right of the dialog.

Available Applications	PID	Path
Adobe Photoshop CS3 Extended - [Untitled...	10496	C:\Program Files (x86)\Adobe\Adobe Pho
Are we still on for tomorrow night? - Messag...	7936	C:\Program Files (x86)\Microsoft Office\Of
C:\Program Files\DellTPad\Apntex.exe	6088	a
Engine	5592	a+
HelpAndSamples - Microsoft Visual Studio (...)	9008	c:\Program Files (x86)\Microsoft Visual Stu
Inbox - Inflectra (Adam Sandman) - Microso...	7936	C:\Program Files (x86)\Microsoft Office\Of
Inflectra Sample ATM Application : Login ...	8532	C:\Program Files (x86)\Internet Explorer\ie
Join my network on LinkedIn - Message (H...	7936	C:\Program Files (x86)\Microsoft Office\Of
Menu	6120	C:\Program Files (x86)\X-PRO Vonage\X-
TdmNotify	5012	a

The Recording Activity (RA) dialog box will appear:

Recording Activity for "Inflectra | Sample ATM Application : Login - Windows Internet Explorer"

#	Object	Action	Data	Comment

Verify (Ctrl+1) Learn (Ctrl+2) Spy (Ctrl+5) Pick Object... Resume

Analog (Ctrl+4) _Simulated Cancel Finish (Ctrl+3)

Paused Transparent

The **RA dialog** has a grid. As you interact with the SampleATM program, the grid will automatically populate with your actions.

2.4. Recording the User Interactions

Let's begin creating the test. On the SampleATM login page, type *user@mycompany.com* into the username text box. Press the tab key. You'll notice that the **RA dialog** has changed. Your action, entering a username, is listed in the grid:

Recording Activity for "Inflectra | Sample ATM Application : Login - Windows Internet Explorer"

#	Object	Action	Data	Comment
2	Inflectra Sa...	SendK...	user@mycompany.com	Type

The password for user *user@mycompany.com* is *rapise*. Type the password in and then press the **Sign-On** button. Two more rows should appear in the **RA dialog**: one to represent the password entry, and one to represent the button click.

Recording Activity for "Inflectra | Sample ATM Application : Login - Windows Internet Explorer"

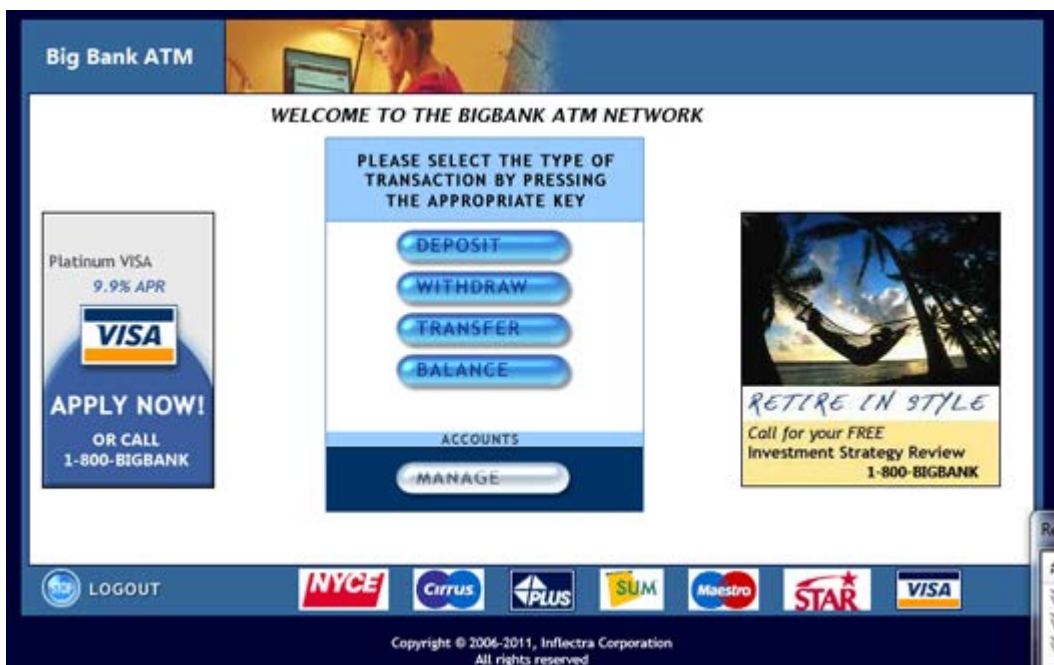
#	Object	Action	Data	Comment
2	Inflectra Sa...	SendK...	user@mycompany.com	Type
4	Password	SendK...	rapise	Type
5	Sign-On	LClick	81,4	User clicks at: 81. 4 in 'Sign-On'

Verify (Ctrl+1) Learn (Ctrl+2) Spy(Ctrl+5) Pick Object... Resume

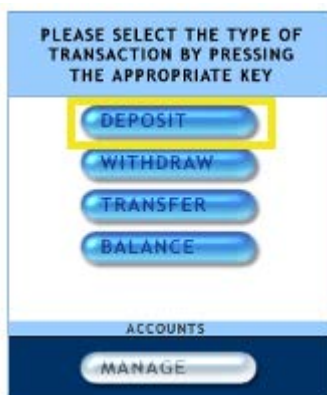
Analog (Ctrl+4) _Simulated Cancel Finish (Ctrl+3)

Paused Transparent

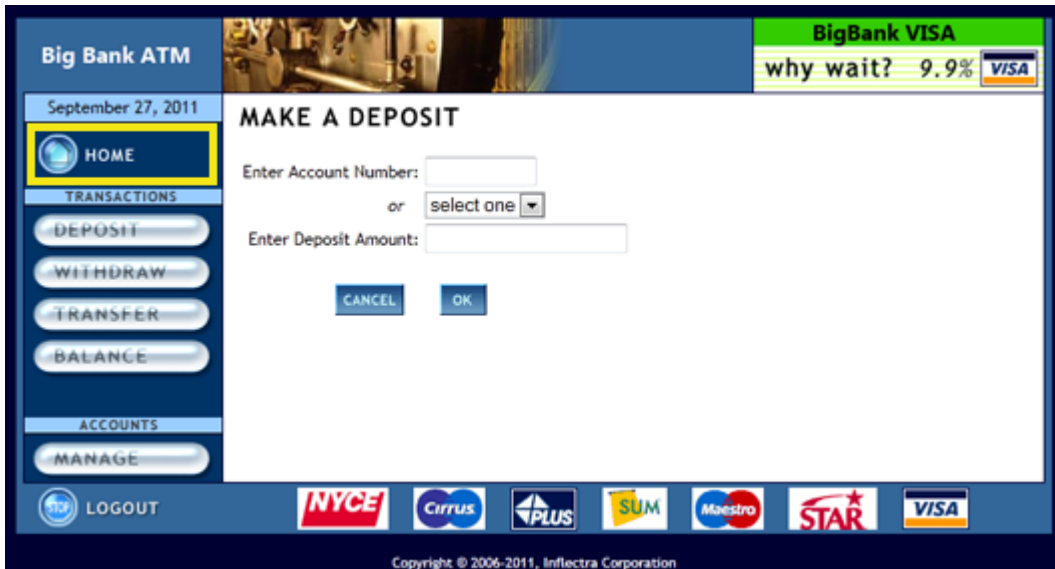
You should now be on a new screen of the SampleATM application, the Main Menu:



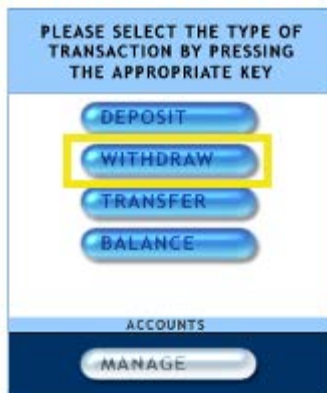
Click the **DEPOSIT** button. It is highlighted in the next screenshot:



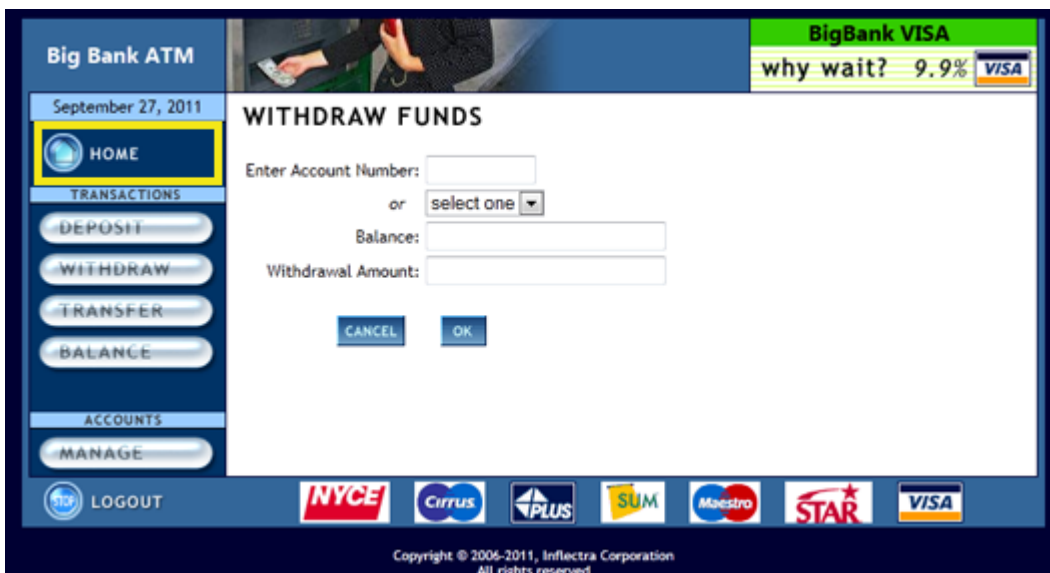
You should now be on the Deposit page (see the below image). Click the **HOME** button to go back to the main menu.



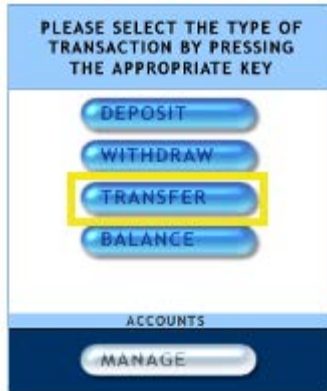
Now, click the **WITHDRAW** button:



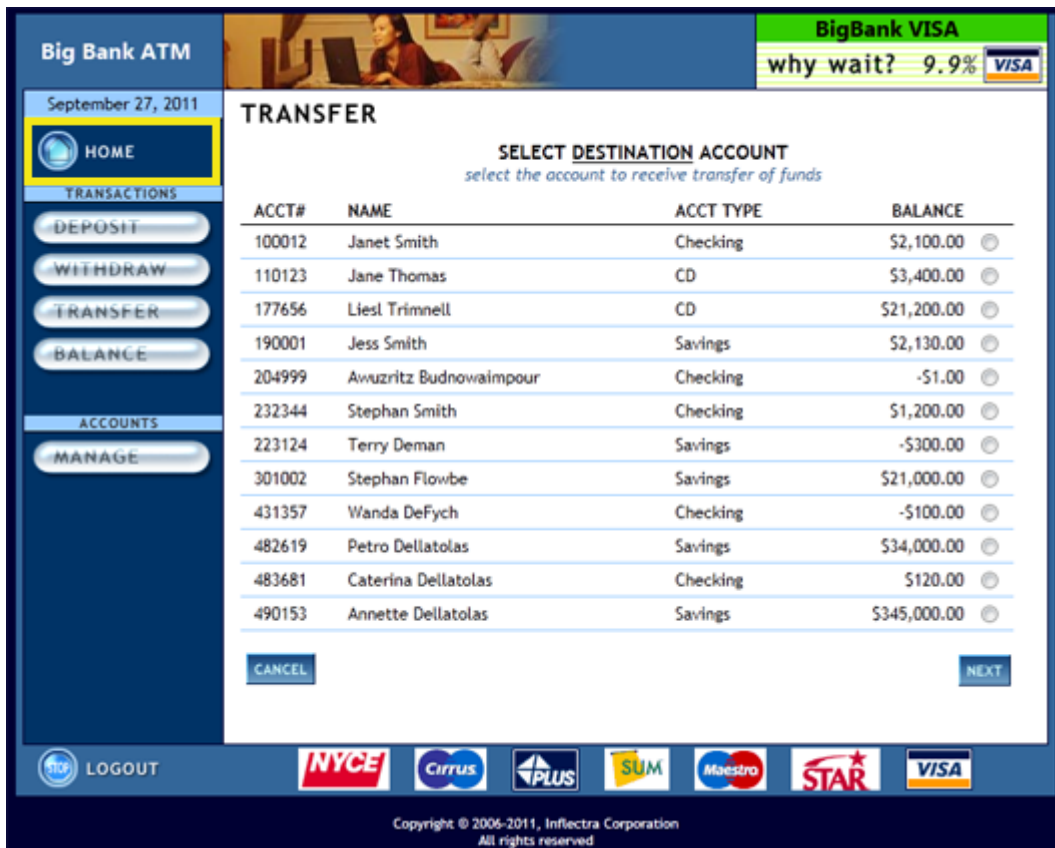
You should now be on the Withdraw Funds page. Click the **HOME** button to go back to the main menu.



Click the **TRANSFER** button:



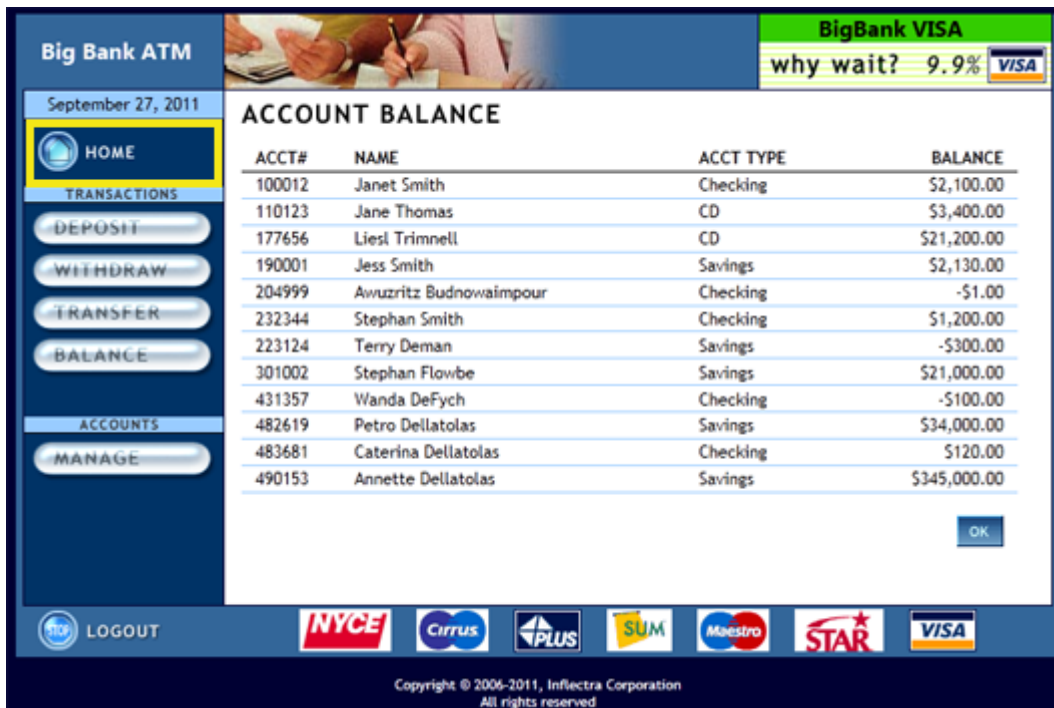
You should now be on the Transfer page. Click the **HOME** button to go back to the main menu.



Click the **BALANCE** button:

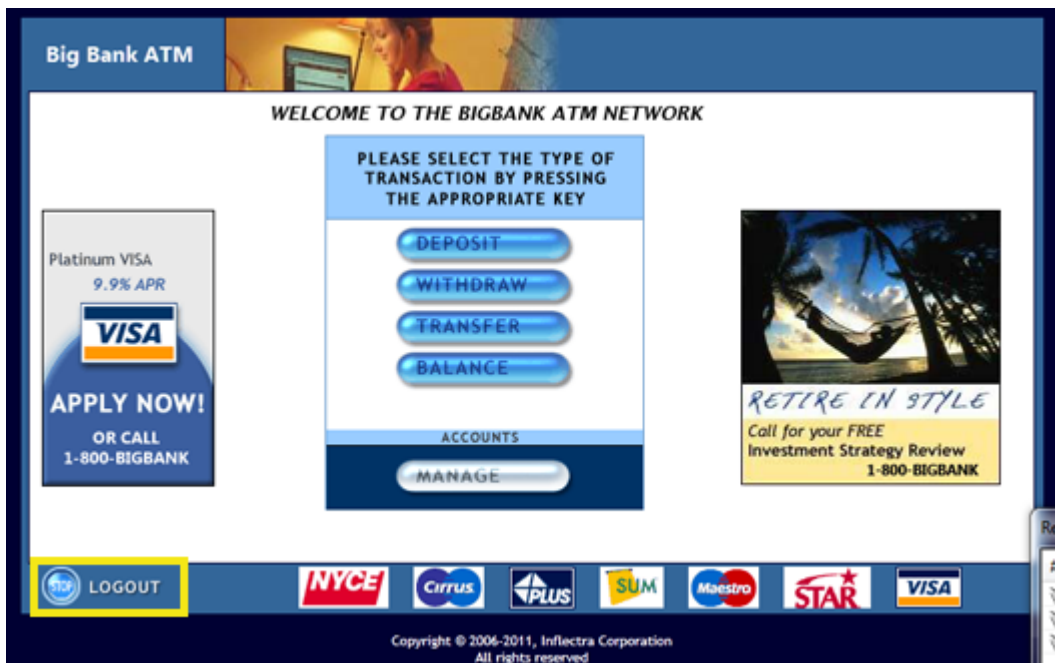


You should now be on the Balance page. Click the **HOME** button to go back to the main menu.

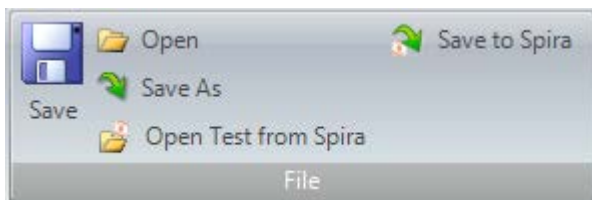


At this point, there should be 11 rows in the **RA dialog** grid.

You are now back on the Main Menu. Click **LOGOUT** (lower left).



To end the recording session, you can either press **CTRL+3** or press the **Stop** button on the Record dialog. End the recording session now. You will see a script created from your recording session in the Rapise window. Let's save our test. Press the **Save** button at the top left of the Rapise window:



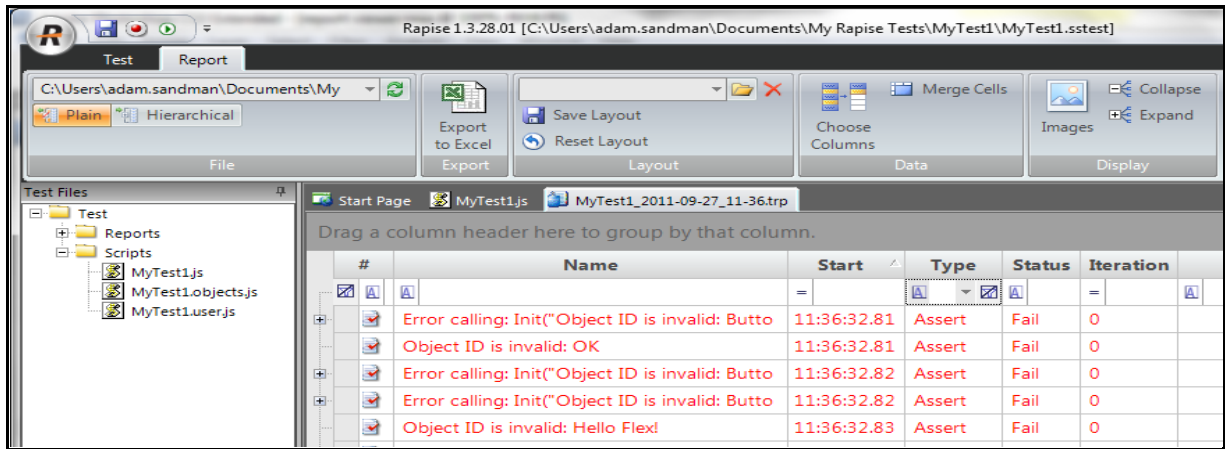
2.5. Playback of the Record Actions

Let's execute the test we just created. First, close Internet explorer. Rapise will open a new instance of Internet Explorer to the correct url (SampleATM) when the test begins.

To execute the script, press the Play button at the top middle of the Rapise window.



After execution, a screen like the one below will appear. Each row represents a step in the test. The rows with green text are steps which passed, whereas the rows with red text are the steps which failed.



Congratulations... You have just recorded and played-back your first automated test script using Rapise. Now we recommend that you take a look at the *Rapise User Manual*. This contains several more in-depth tutorials for using the system as well as an in-depth reference guide of all the different features available.

Legal Notices

This publication is provided as is without warranty of any kind, either express or implied, including, but not limited to, the implied warranties of merchantability, fitness for a particular purpose, or non-infringement.

This publication could include technical inaccuracies or typographical errors. Changes are periodically added to the information contained herein; these changes will be incorporated in new editions of the publication. Inflectra Corporation may make improvements and/or changes in the product(s) and/or program(s) and/or service(s) described in this publication at any time.

The sections in this guide that discuss internet web security are provided as suggestions and guidelines. Internet security is constantly evolving field, and our suggestions are no substitute for an up-to-date understanding of the vulnerabilities inherent in deploying internet or web applications, and Inflectra cannot be held liable for any losses due to breaches of security, compromise of data or other cyber-attacks that may result from following our recommendations.

SpiraTest[®], SpiraPlan[®], SpiraTeam[®], Rapise[™] and Inflectra[®] are either trademarks or registered trademarks of Inflectra Corporation in the United States of America and other countries. Microsoft[®], Windows[®], Explorer[®] and Microsoft Project[®] are registered trademarks of Microsoft Corporation. All other trademarks and product names are property of their respective holders.

Please send comments and questions to:

Technical Publications

Inflectra Corporation

8121 Georgia Ave, Suite 504

Silver Spring, MD 20910-4957

U.S.A.

support@inflectra.com