

Take Control of Your Automated Testing

SpiraTest® is a complete **test management system** that is used to manage your manual testing activities and track the test results against your project's requirements.

Now, using RemoteLaunch® from Inflectra you can extend the power of SpiraTest® to manage your **automated test scripts** for functional testing, regression testing and load/performance testing.

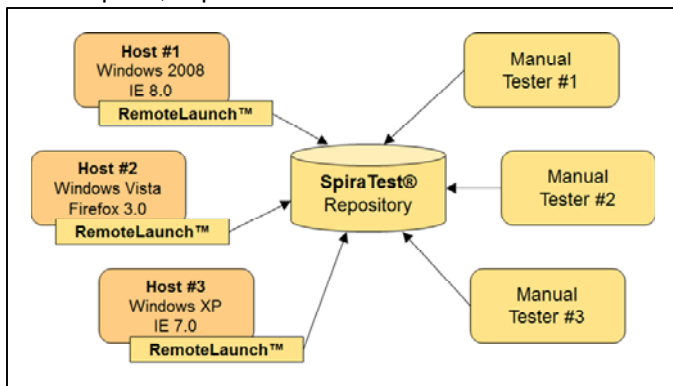
Key Features Include:

- **Parameterized Test Execution**
 RemoteLaunch will schedule and launch automated test scripts across your enterprise. Perform data-driven testing using the ability to pass SpiraTest parameter values to RemoteLaunch.
- **Centralized Reporting of Automated Tests**
 RemoteLaunch allows you to have a central repository of test results from all your manual and automated testing, linked to requirements and bugs.
- **Open Architecture**
 Communicates using *standard web protocols* - no firewall changes needed. Plug-in architecture allows RemoteLaunch to communicate with a variety of *commercial and open-source* test automation tools.

Test Automation Architecture

Using RemoteLaunch you can manage an entire global test lab from your central SpiraTest server, with automated test sets being executed using a variety of different automation technologies 24/7.

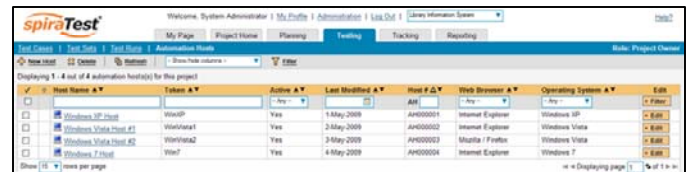
With RemoteLaunch's open architecture, you can schedule and track manual testing in the same environment as your automated tests - with plugs available for the best of breed test automation tools such as QuickTestPro, TestComplete, Squish and Selenium.



Holistic View of Your Testing

Automated test scripts are a valuable way to perform **regression testing** on applications to ensure that new features or bug fixes don't break existing functionality. They typically supplement manual testing which is more efficient at the testing of new features and capabilities.

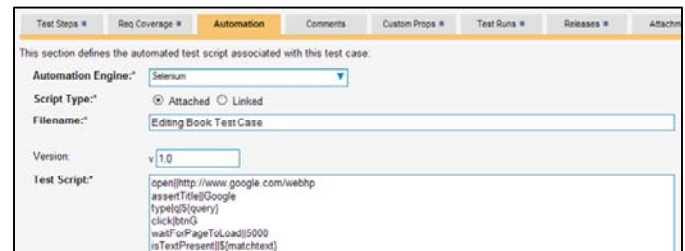
For complete test coverage you need to perform the same automated tests across a **complete spectrum** of platforms, browsers, devices and environments. Using RemoteLaunch® with SpiraTest allows you to manage the automated testing process. Track the automated tests against the project's requirements. Have a holistic view of manual and automated testing



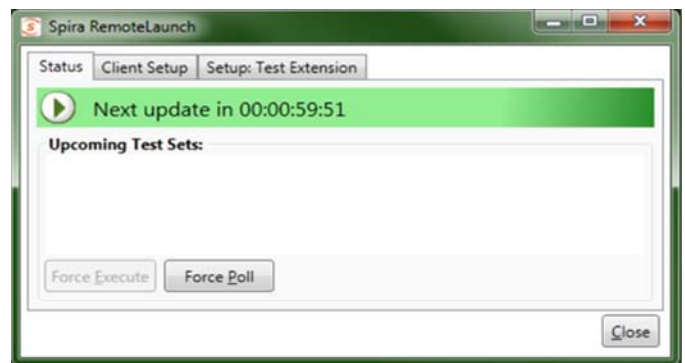
Host Name	Token	Active	Last Modified	Host FQDN	Web Browser	Operating System	Edit
Windows XP Host	Win01	Yes	14 May 2009	AH00001	Internet Explorer	Windows XP	Edit
Windows Vista Host #1	Win001	Yes	24 May 2009	AH00002	Internet Explorer	Windows Vista	Edit
Windows Vista Host #2	Win002	Yes	24 May 2009	AH00003	Mozilla / Firefox	Windows Vista	Edit
Windows 7 Host	Win7	Yes	4 May 2009	AH00004	Internet Explorer	Windows 7	Edit

Automated Test Scheduling

With SpiraTest and RemoteLaunch you have the **ultimate in flexibility**. You can either store your automated test scripts directly in SpiraTest or simply link the test cases to your existing test script repository:



Once the test scripts are linked, you can use SpiraTest's powerful **test scheduling** features to specify the execution plan. RemoteLaunch agents connect to SpiraTest and launch the appropriate scripts based on the schedule:



Manage your manual and automated tests...

...in one integrated environment

User Interface Functional Testing

Once your developers have completed their unit testing activities using the appropriate xUnit framework (integrated with SpiraTest), the next step is to ensure that the user interface behaves as expected.

Depending on the client technology being used (web, Flash, WinForms, Java, WPF, etc.) there are different tools and systems that can be used to simulate the user's experience and ensure that the functionality works across all the expected platforms and environments.

SpiraTest and RemoteLaunch are technology-agnostic and can work with the industry-leading functional testing tools such as:

- HP QuickTest Pro
- SmartBear TestComplete
- Froglogic Squish
- Selenium-Remote Control
- FitNesse
- Micro Focus Test Partner



Web Service and SOA Testing

Modern applications and systems are not islands of functionality, but parts of a larger distributed ecosystem of services. Testing that the end-to-end business process works correctly is vital when ensuring the integrity of data.

SpiraTest and RemoteLaunch integrate with the market-leading web service testing system – SOAP-UI. Now you can map the web services to your business requirements and validate the overarching business processes.



Load and Performance Testing

Knowing that your application works correctly from a functional perspective is only the first step in delivering a high quality system. Understanding the potential loads that the system will need to support and determining the performance parameters is vital in developing a system that will work in the real-world.

SpiraTest and RemoteLaunch integrate with two of the market-leading Load Testing solutions: **LoadRunner** and **NeoLoad**. Now you can schedule and manage performance scenarios and let SpiraTest & RemoteLaunch do the hard work of keeping track of the results.

Test Set Name	Execution Status	Planned Date	Release	Last Executed	Owner	Status	Test Set #	Edit
Test Set #1 (1)	Completed	10 Mar 2011	Staged	1 Apr 2011	My	Completed	T1000018	✎
Performance Testing (1)	Completed	4 Apr 2011		4 Apr 2011		Completed	T1000019	✎
Performance Testing (1)	Completed	4 Apr 2011		4 Apr 2011		Completed	T1000020	✎
Performance Testing (1)	Completed	4 Apr 2011		4 Apr 2011		Completed	T1000021	✎

Reporting and Analysis

SpiraTest® provides a customizable reporting dashboard that includes printable reports and interactive graphs. When you use RemoteLaunch you get the power of the SpiraTest reporting engine for your automated test scripts.

Now you can keep your management up to date in **real-time** without needing to resort to cutting and pasting from automation log files into spreadsheets or documents.



To learn more about the features offered by RemoteLaunch® and how it will transform Quality Assurance in your organization, please visit www.inflectra.com or contact us at:

Email: sales@inflectra.com
 Phone: 1-866-572-5878 (toll-free)
 +1 202-558-6885 (outside US)

