

SpiraPlan® – Accelerating Project Delivery

SpiraPlan® is a complete **Agile Project Management** System in one package, that manages your project's requirements, releases, iterations, tasks and bugs/issues.

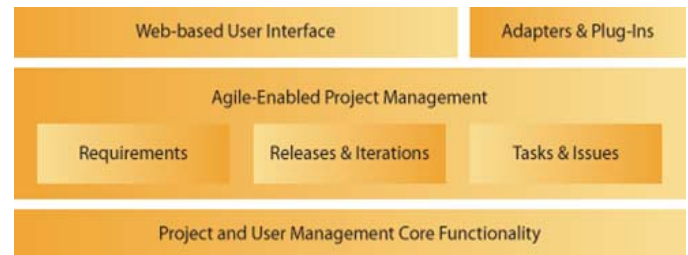
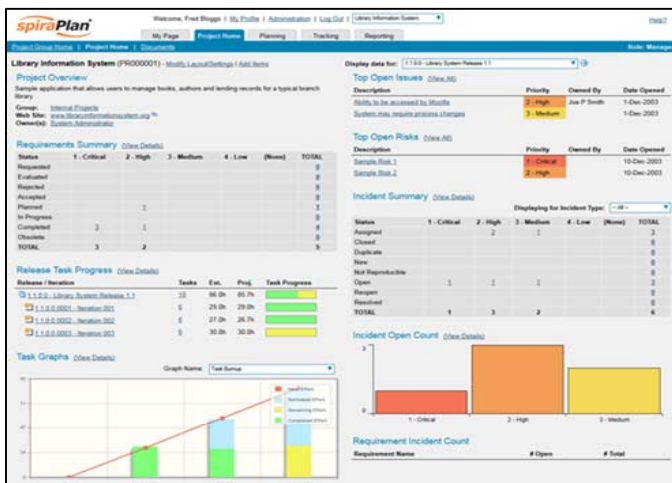
Designed specifically to support agile methodologies such as Scrum, Extreme Programming (XP), DSDM and Agile Unified Process (AUP) it allows teams to manage all their information in one environment.

Key Features Include:

- Manage all project artifacts in one environment**
 Instead of having to buy separate requirements management, project planning and bug-tracking tools, SpiraPlan manages it all in one system.
- Personalized dashboards of key information**
 All of the information you see the health of the project – *requirements estimation, iteration velocity, task burndown, issue counts* – all on one page.
- Intuitive Web User Interface**
 SpiraPlan is 100% web-based, using a clean, intuitive user interface that will be easy to understand by both technical and business users.

Project Summary Dashboards

Each project has a dashboard home-page that summarizes all of the information regarding the project into a comprehensive, easily digestible form that provides a "one-stop-shop" for people interested in understanding the overall status of the project at a glance. It contains summary-level information for all types of artifact (requirements, iterations, tasks, bugs) that you can use to drill-down into the appropriate section of the application.



Requirements Management

At the initial stages of a project, the project manager will use SpiraPlan in conjunction with the business users to determine the initial high level scope of the project, the key features and requirements.

In parallel, the team begins initial estimation of the lowest-level requirements in the requirements matrix to determine the complexity and associated resourcing.

Requirement Name	Task Progress	Importance	Status	Release	Plan Effort	Task Effort	Actual Effort	Req #	Edit
Functional System Requirements	In Progress	3	In Progress	1.0.0.0	140.0h	180.0h	180.0h	RG000001	2 Edit
Library Management System	In Progress	3	In Progress	1.0.0.0	140.0h	180.0h	180.0h	RG000002	2 Edit
Ability to add new books to the system	Completed	1	Completed	1.0.0.0	10.0h	10.0h	10.0h	RG000003	2 Edit
Ability to delete existing books in the system	Completed	1	Completed	1.0.0.0	10.0h	10.0h	10.0h	RG000004	2 Edit
Ability to associate books with different authors	Completed	1	Completed	1.0.0.0	10.0h	10.0h	10.0h	RG000005	2 Edit
Ability to associate books with different authors	Completed	1	Completed	1.0.0.0	10.0h	10.0h	10.0h	RG000006	2 Edit
Ability to associate books with different authors	Completed	1	Completed	1.0.0.0	10.0h	10.0h	10.0h	RG000007	2 Edit
Ability to associate books with different authors	Completed	1	Completed	1.0.0.0	10.0h	10.0h	10.0h	RG000008	2 Edit
Ability to associate books with different authors	Completed	1	Completed	1.0.0.0	10.0h	10.0h	10.0h	RG000009	2 Edit
Ability to associate books with different authors	Completed	1	Completed	1.0.0.0	10.0h	10.0h	10.0h	RG000010	2 Edit
Ability to associate books with different authors	Completed	1	Completed	1.0.0.0	10.0h	10.0h	10.0h	RG000011	2 Edit
Ability to associate books with different authors	Completed	1	Completed	1.0.0.0	10.0h	10.0h	10.0h	RG000012	2 Edit
Ability to associate books with different authors	Completed	1	Completed	1.0.0.0	10.0h	10.0h	10.0h	RG000013	2 Edit
Ability to associate books with different authors	Completed	1	Completed	1.0.0.0	10.0h	10.0h	10.0h	RG000014	2 Edit
Ability to associate books with different authors	Completed	1	Completed	1.0.0.0	10.0h	10.0h	10.0h	RG000015	2 Edit
Ability to associate books with different authors	Completed	1	Completed	1.0.0.0	10.0h	10.0h	10.0h	RG000016	2 Edit
Ability to associate books with different authors	Completed	1	Completed	1.0.0.0	10.0h	10.0h	10.0h	RG000017	2 Edit
Ability to associate books with different authors	Completed	1	Completed	1.0.0.0	10.0h	10.0h	10.0h	RG000018	2 Edit
Ability to associate books with different authors	Completed	1	Completed	1.0.0.0	10.0h	10.0h	10.0h	RG000019	2 Edit
Ability to associate books with different authors	Completed	1	Completed	1.0.0.0	10.0h	10.0h	10.0h	RG000020	2 Edit

Release and Iteration Planning

SpiraPlan® provides the ability to track different releases of the project being managed. From a project planning perspective, the releases are the major milestones in the project, which are further sub-divided into iterations which are separate mini-projects with associated project scope and tasks.

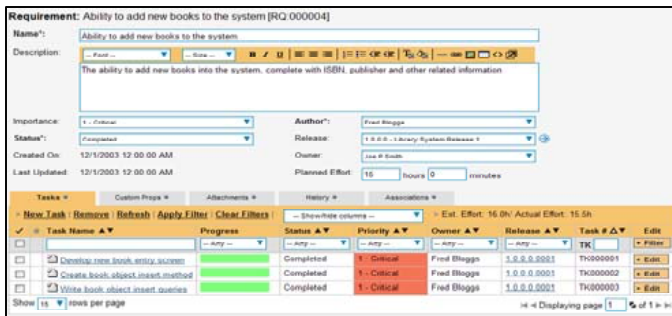
Once the high-level release schedule has been finalized, the requirements defined in the project backlog can then be prioritized and scheduled against the appropriate release and iteration according to their business priority.

Release Name	Iteration	Importance	Status	Release	Plan Effort	Task Effort	Actual Effort	Req #	Edit
1.0.0.0 (1/1/2004 - 3/1/2004)	1.0.0.0 (1/1/2004 - 3/1/2004)	3	Completed	1.0.0.0	140.0h	180.0h	180.0h	RG000001	2 Edit
1.0.0.0 (1/1/2004 - 3/1/2004)	1.0.0.0 (1/1/2004 - 3/1/2004)	3	Completed	1.0.0.0	140.0h	180.0h	180.0h	RG000002	2 Edit
1.0.0.0 (1/1/2004 - 3/1/2004)	1.0.0.0 (1/1/2004 - 3/1/2004)	3	Completed	1.0.0.0	140.0h	180.0h	180.0h	RG000003	2 Edit
1.0.0.0 (1/1/2004 - 3/1/2004)	1.0.0.0 (1/1/2004 - 3/1/2004)	3	Completed	1.0.0.0	140.0h	180.0h	180.0h	RG000004	2 Edit
1.0.0.0 (1/1/2004 - 3/1/2004)	1.0.0.0 (1/1/2004 - 3/1/2004)	3	Completed	1.0.0.0	140.0h	180.0h	180.0h	RG000005	2 Edit
1.0.0.0 (1/1/2004 - 3/1/2004)	1.0.0.0 (1/1/2004 - 3/1/2004)	3	Completed	1.0.0.0	140.0h	180.0h	180.0h	RG000006	2 Edit
1.0.0.0 (1/1/2004 - 3/1/2004)	1.0.0.0 (1/1/2004 - 3/1/2004)	3	Completed	1.0.0.0	140.0h	180.0h	180.0h	RG000007	2 Edit
1.0.0.0 (1/1/2004 - 3/1/2004)	1.0.0.0 (1/1/2004 - 3/1/2004)	3	Completed	1.0.0.0	140.0h	180.0h	180.0h	RG000008	2 Edit
1.0.0.0 (1/1/2004 - 3/1/2004)	1.0.0.0 (1/1/2004 - 3/1/2004)	3	Completed	1.0.0.0	140.0h	180.0h	180.0h	RG000009	2 Edit
1.0.0.0 (1/1/2004 - 3/1/2004)	1.0.0.0 (1/1/2004 - 3/1/2004)	3	Completed	1.0.0.0	140.0h	180.0h	180.0h	RG000010	2 Edit
1.0.0.0 (1/1/2004 - 3/1/2004)	1.0.0.0 (1/1/2004 - 3/1/2004)	3	Completed	1.0.0.0	140.0h	180.0h	180.0h	RG000011	2 Edit
1.0.0.0 (1/1/2004 - 3/1/2004)	1.0.0.0 (1/1/2004 - 3/1/2004)	3	Completed	1.0.0.0	140.0h	180.0h	180.0h	RG000012	2 Edit
1.0.0.0 (1/1/2004 - 3/1/2004)	1.0.0.0 (1/1/2004 - 3/1/2004)	3	Completed	1.0.0.0	140.0h	180.0h	180.0h	RG000013	2 Edit
1.0.0.0 (1/1/2004 - 3/1/2004)	1.0.0.0 (1/1/2004 - 3/1/2004)	3	Completed	1.0.0.0	140.0h	180.0h	180.0h	RG000014	2 Edit
1.0.0.0 (1/1/2004 - 3/1/2004)	1.0.0.0 (1/1/2004 - 3/1/2004)	3	Completed	1.0.0.0	140.0h	180.0h	180.0h	RG000015	2 Edit
1.0.0.0 (1/1/2004 - 3/1/2004)	1.0.0.0 (1/1/2004 - 3/1/2004)	3	Completed	1.0.0.0	140.0h	180.0h	180.0h	RG000016	2 Edit
1.0.0.0 (1/1/2004 - 3/1/2004)	1.0.0.0 (1/1/2004 - 3/1/2004)	3	Completed	1.0.0.0	140.0h	180.0h	180.0h	RG000017	2 Edit
1.0.0.0 (1/1/2004 - 3/1/2004)	1.0.0.0 (1/1/2004 - 3/1/2004)	3	Completed	1.0.0.0	140.0h	180.0h	180.0h	RG000018	2 Edit
1.0.0.0 (1/1/2004 - 3/1/2004)	1.0.0.0 (1/1/2004 - 3/1/2004)	3	Completed	1.0.0.0	140.0h	180.0h	180.0h	RG000019	2 Edit
1.0.0.0 (1/1/2004 - 3/1/2004)	1.0.0.0 (1/1/2004 - 3/1/2004)	3	Completed	1.0.0.0	140.0h	180.0h	180.0h	RG000020	2 Edit

A complete Agile Project Management System... ...in one integrated environment

Requirements Elaboration & Task Tracking

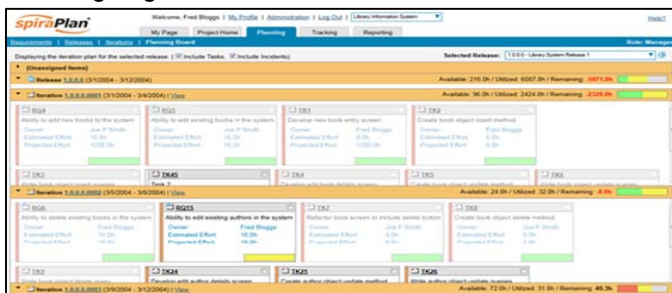
In addition to storing the requirements for a project, SpiraPlan® includes the capability of drilling each lowest-level requirement down further into its complete work-breakdown structure of tasks ready for scheduling:



These tasks are the discrete activities that each member of the development team would need to carry out for the requirement to be fulfilled. Each task can be assigned to an individual user as well as associated with a particular release or iteration. The system can then be used by the project manager to track the completion of the different tasks to determine if the project is on schedule.

Storyboard and Task Assignment

One the project is underway, the combined business and technical team work together to develop the sprint plan for the iterations, breaking up the features into discrete tasks and assigning the tasks to the individual team members:

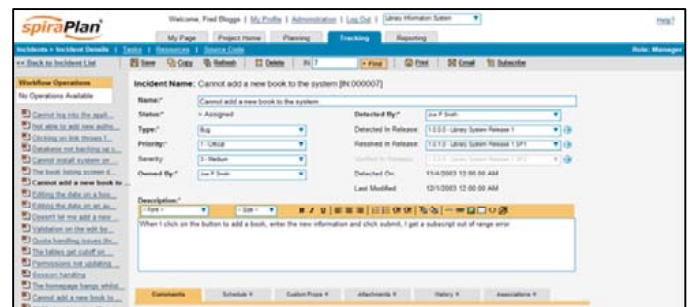


During development as the team work to complete the various tasks and stories, the system will track changes in the actual effort to determine if the plan needs to be rebalanced to ensure on-time, on-budget delivery.

Issue / Defect / Bug Tracking

SpiraPlan provides the ability to create and manage incidents (bugs, issues, risks, defects, enhancements, etc.) that are raised during the development and testing of the project. Incidents can be categorized into various types, each with its own specific workflow and business rules.

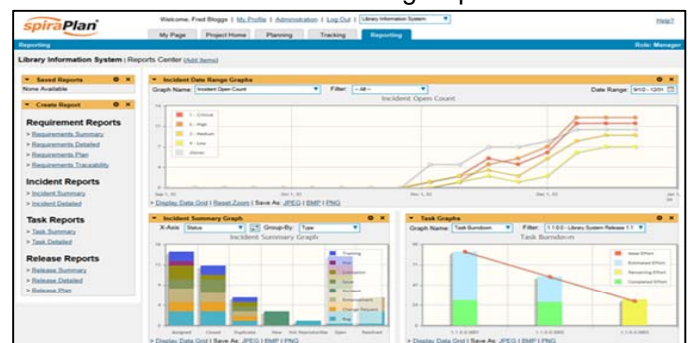
Unlike a standalone bug tracking tool, you can trace the defects back to the requirement and release that generated them as well as to the source code revisions.



Reporting and Analysis

SpiraPlan provides a customizable reporting dashboard that includes printable reports and interactive graphs:

- > Project Velocity, Burndown and Burnup charts
- > Incident Discovery, Turnaround, Aging charts
- > Requirements Planning Reports
- > Incident and Task Tracking Reports
- > Release and Iteration Planning Reports



To learn more about the features offered by SpiraPlan®, and how it will transform Project Management in your organization, please visit www.inflectra.com or contact us at:

Email: sales@inflectra.com
Phone: 1-866-572-5878 (toll-free)
+1 202-558-6885 (outside US)

