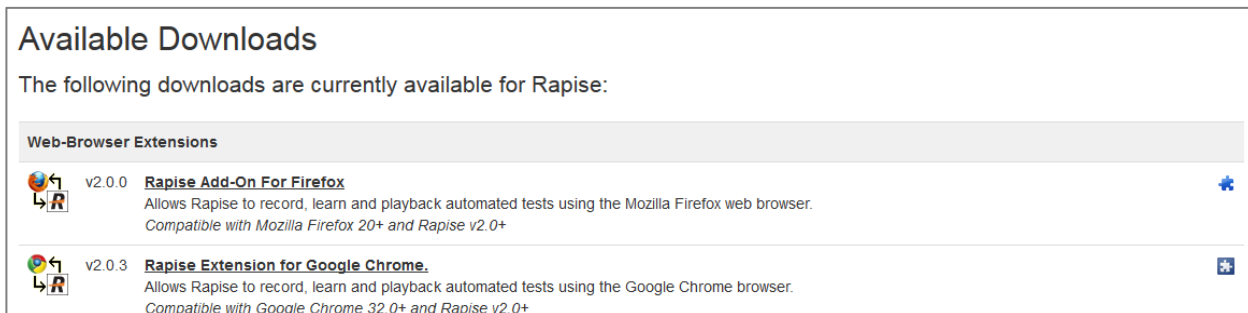


## Preparing Firefox for Rapise®

In order to test web applications using the Firefox web browser, you will need to install an extension for Firefox that allows Rapise to interact with it.

1. Launch Firefox. Navigate to the following URL: <http://www.inflectra.com/Rapise/Downloads.aspx> :



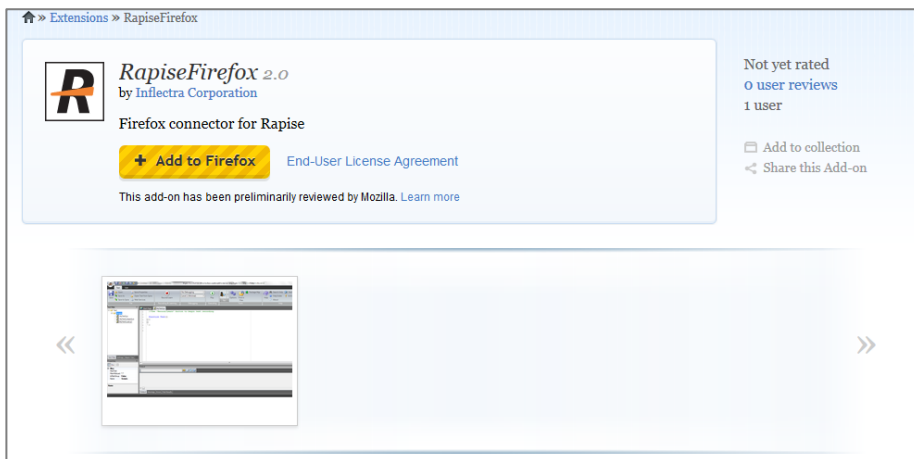
**Available Downloads**

The following downloads are currently available for Rapise:

**Web-Browser Extensions**

- v2.0.0 Rapise Add-On For Firefox**  
Allows Rapise to record, learn and playback automated tests using the Mozilla Firefox web browser.  
*Compatible with Mozilla Firefox 20+ and Rapise v2.0+*
- v2.0.3 Rapise Extension for Google Chrome.**  
Allows Rapise to record, learn and playback automated tests using the Google Chrome browser.  
*Compatible with Google Chrome 32.0+ and Rapise v2.0+*

2. Click on the 'Rapise Add-In For Firefox' hyperlink and it will take you to the Firefox Add-Ons page:



Extensions » RapiseFirefox

**RapiseFirefox 2.0**  
by Inflectra Corporation  
Firefox connector for Rapise

[+ Add to Firefox](#) [End-User License Agreement](#)

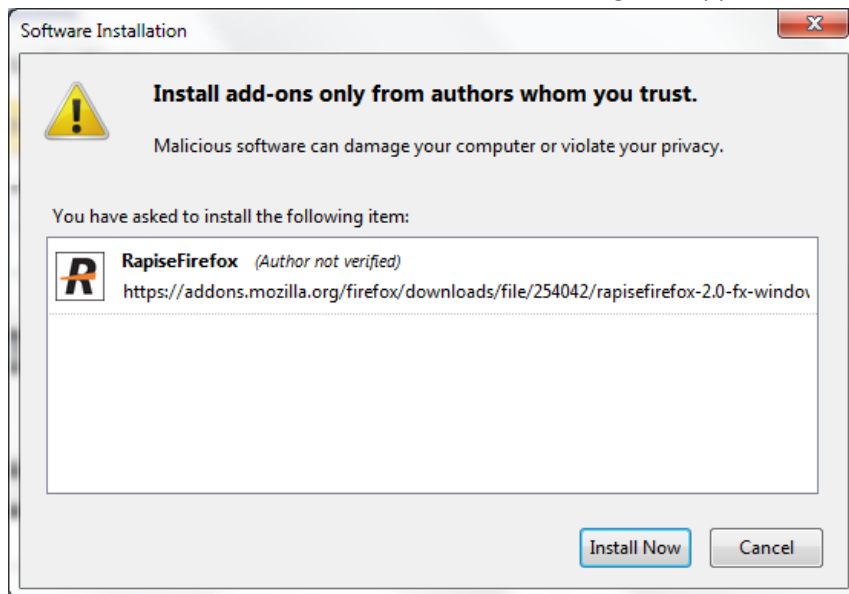
This add-on has been preliminarily reviewed by Mozilla. [Learn more](#)

Not yet rated  
0 user reviews  
1 user

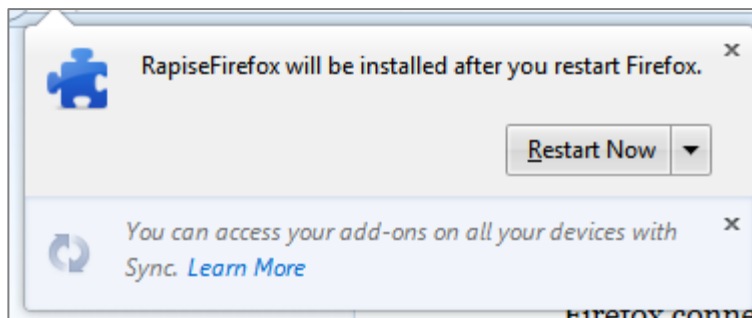
[Add to collection](#)  
[Share this Add-on](#)

3. Click on the 'Add to Firefox' button to install the Add-On into your instance of Firefox.

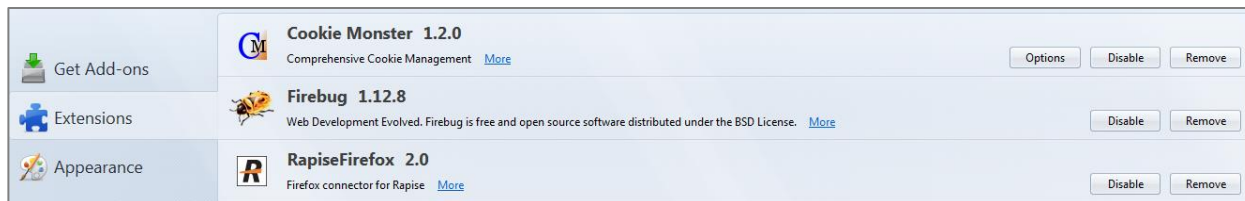
4. Click “Install Now” in the software installation dialog that appears:



5. When installation is complete press “Restart Now” to complete the installation:



6. Once Firefox is started again, you should now see the RapiseFirefox Add-On listed in the ‘Extensions’ section of the Firefox Add-ons Manager:



7. Firefox is ready to be used with Rapise for automated testing.



**Note:** Rapise requires localhost port 4247 to be accessible for correct operation. Please, make sure that this port is unblocked in your Firewall.