

Rapise – Rapid & Flexible Automated Testing

Rapise® provides **powerful** and **easy to use automated testing**. When you need to test **web, mobile or desktop** applications or test your APIs and web services, Rapise makes it easy. Ideal for today's **agile** software projects.

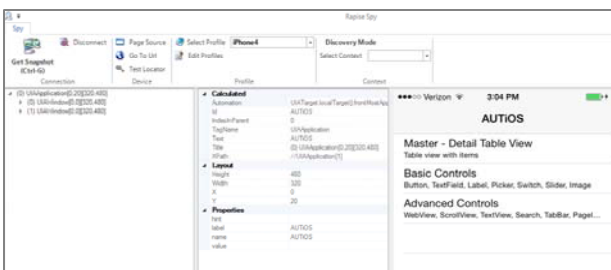
Rapise accelerates your **manual** and **automated testing** – for all types of applications. With powerful **exploratory, cross-browser** and **data-driven testing**. Rapise is fully extensible, with third-party library support.

Key Features Include:

- **Web, Mobile & Desktop Testing in One Tool**
 Rapise comes out of the box with support for testing Desktop, Mobile and Web Applications. It allows the *same test scripts* to be executed in multiple browsers unchanged and supports most GUI frameworks.
- **Learn and Go Testing™**
 Rapise's Learn and Go testing is much more **efficient** than traditional record & playback. Objects are edited during the learning process instead of at the end. Significantly reduces testing time and **gets your application to market faster**.
- **Extensible Platform for Test Automation**
 Rapise's open architecture provides *unlimited flexibility* to extend the system to meet the unique testing needs of your software applications.

Mobile Device Testing

Rapise lets you record and play automated tests on a variety of mobile devices using either **Apple iOS** or **Android**. Rapise gives you the flexibility to test your applications on either **real** or **simulated devices**.

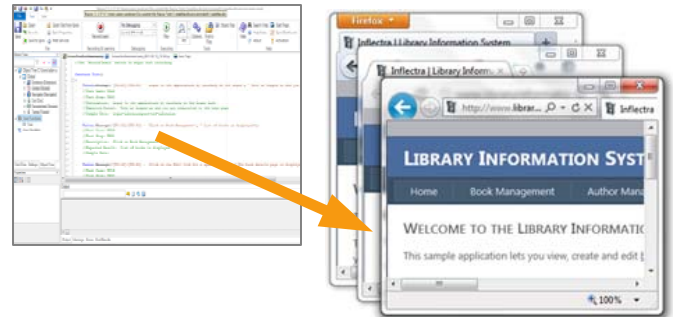


Rapise lets you record and play automated tests on real iOS devices (**iPad and iPhone**) as well as test applications using the **iOS simulator**. Rapise lets you record and play automated tests on real **Android devices** as well as test applications using the **Android simulator**.

Cross-Browser Testing

Rapise is your best choice for cross-browser testing, with support for multiple versions of **Internet Explorer, Firefox Chrome, Safari** and **Opera**.

Rapise will test your web applications in all of the most widely used browsers.



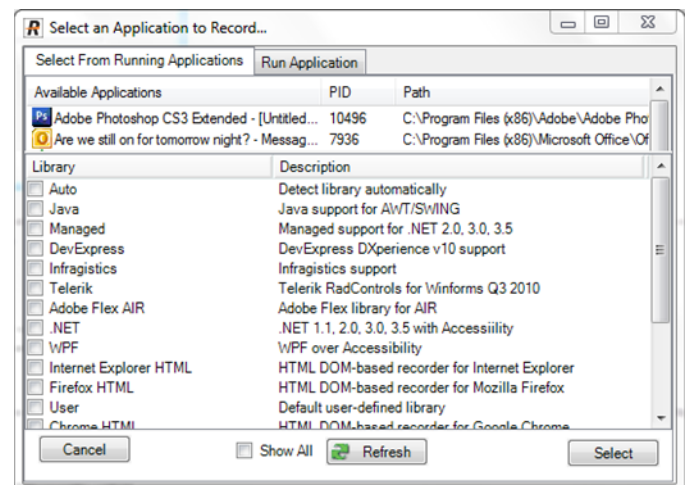
Record or create one test script and execute the same script without modification across the major browsers. Rapise comes with built-in support for the different web application frameworks such as **jQuery**. It also includes integrates with the popular **Selenium WebDriver** platform:



Graphic User Interface (GUI) Testing

Rapise® provides powerful **built-in** support for the following GUI platforms: Java, Windows Forms including Infragistics, DevExpress, Telerik, ComponentOne, SyncFusion, Adobe Flash/Flex including AIR, Microsoft .NET, Visual Basic 6, Win32, Silverlight, and WPF.

With Rapise you can use the **same environment** to test all these different technologies and platforms.



Web Service & API Testing

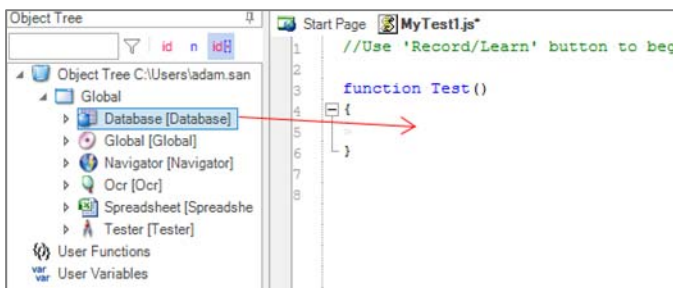
A web service is a unit of managed code that can be remotely invoked using **web protocols**. This allows you to share your application's functionality with other programs.

Rapise comes with built-in support for testing **RESTful** web services using a variety of formats including **XML** and **JSON**. Rapise's query builder streamlines the testing of your APIs with robust debugging and message tracing.

Data-Driven Testing

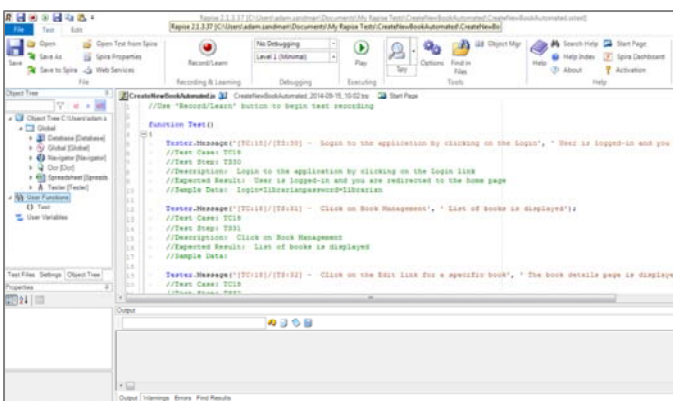
Data-driven testing is the creation of test scripts to run together with their related data in a framework. The framework provides **re-usable test logic** to reduce maintenance and improve test coverage.

Rapise provides **strong support** for data-driven testing with the ability to load in test data from an Excel spreadsheet or relational database.



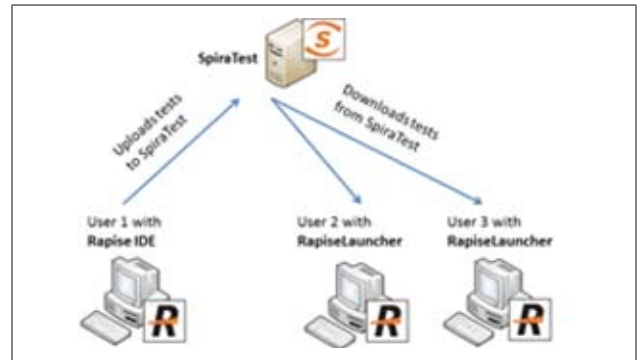
Extensibility & Custom Libraries

The JavaScript source code for library recognition and execution is available to the user, as well as a JavaScript Application Programming Interface (API). New **recognition and execution capabilities** can be added to Rapise by the end user and **shared with colleagues**, giving your team the flexibility to automate where other tools fail.



Integration with SpiraTest

SpiraTest provides an integrated, holistic test management solution that manages your requirements, tests and incidents. When you use Rapise with SpiraTest, you can centrally manage your automated tests and remotely schedule and launch them in a globally distributed test lab.



You can record and create your test cases using Rapise, upload them to SpiraTest and then schedule the tests to be automatically executed on multiple remote computers.

Manual & Exploratory Testing

In addition to its world class automation functionality, Rapise brings the power of automation to your **manual and exploratory testing**. No more laborious creation of test cases and test steps. Rapise, lets your testing keep pace with your development cycles by **automatically creating** the test cases as your simply **use the application**:

StepId	Description	Expected Result
Step 1	User clicks at: 37, 11 in 'Application menu'	
Step 2	User clicks at: 42, 12 in 'Application menu'	
Step 3	User clicks at: 44, 13 in 'New'	
Step 4	User clicks at: 15, 9 in 'Pencil'	
Step 5	User clicks at: 14, 16 in 'Text'	
Step 6	User clicks at: 156, 256 in "	

To learn more about the features offered by Rapise™, and how it will transform Quality Assurance in your organization, please visit www.inflectra.com or contact us via:

Email: sales@inflectra.com
 Phone: 1-866-572-5878 (toll-free)
 +1 202-558-6885 (outside US)

